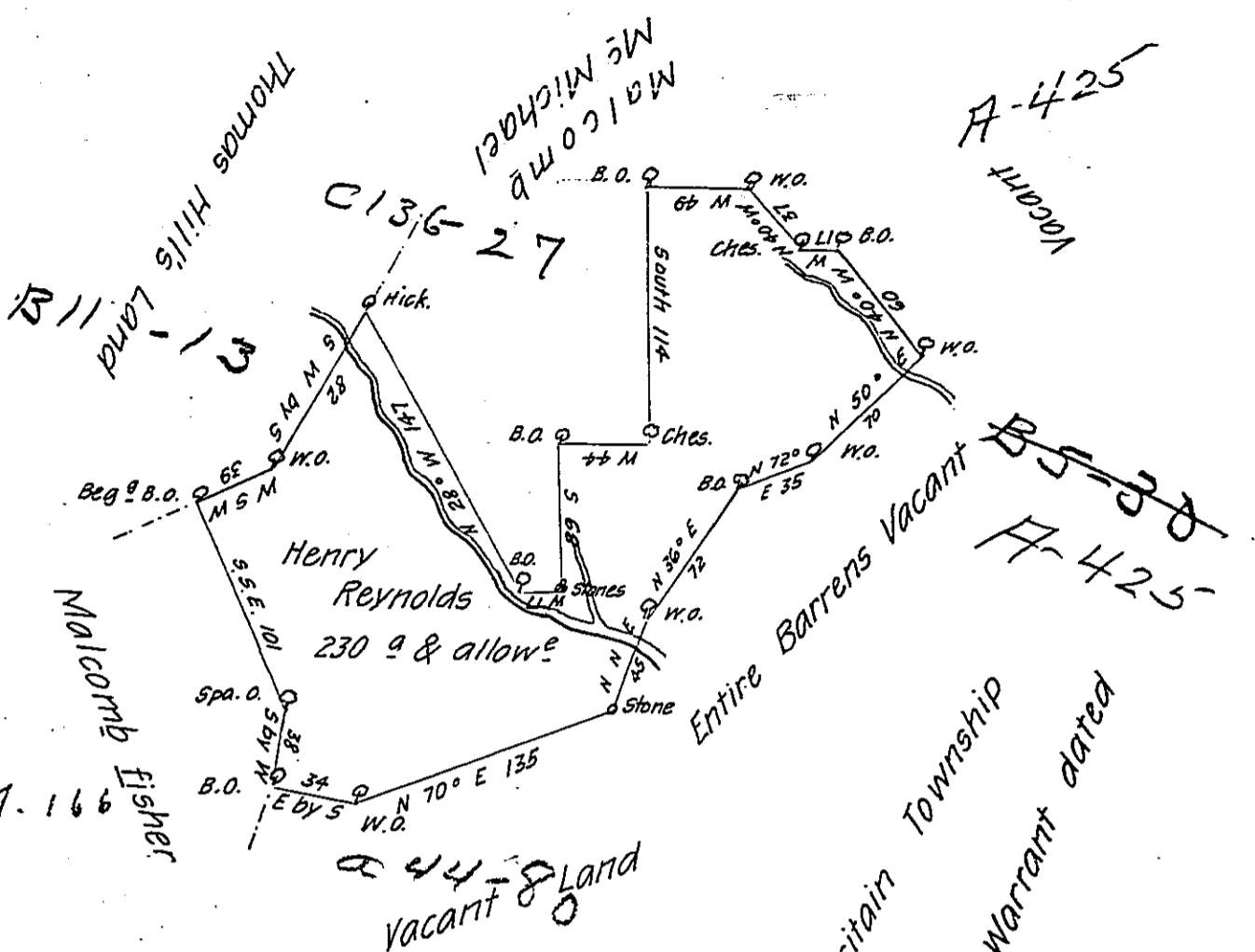


Henry Reynolds
230 acres & Allowance of 6 P^c Cent
Surveyed the 15th of ye 1st month 1748/9



Situate in Little
Lancaster County; Was Survey'd by Vertue
February y^e 15th A.D. 1748

By
Geo. Churchman —

No. —
A Caveat ag^t this by Mal. Mc Michael

IN TESTIMONY that the above is a copy of the original remaining on file in the Department of Internal Affairs of Pennsylvania, made conformably to an Act of Assembly approved the 16th day of February, 1833, I have hereunto set my Hand and caused the Seal of said Department to be affixed at Harrisburg, this fifteenth day of June 1906

Geo. P. Brown
Secretary of Internal Affairs.